

Description

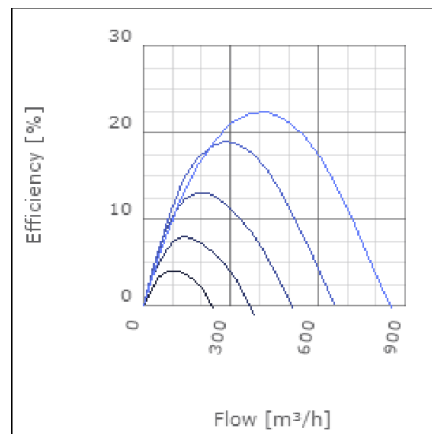
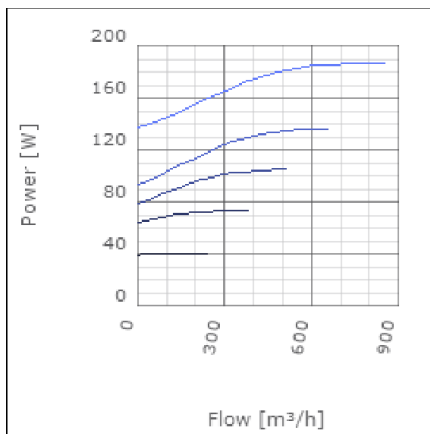
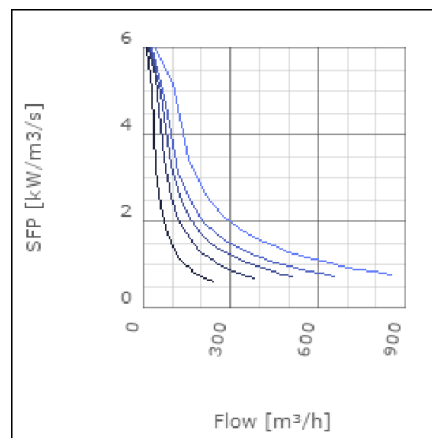
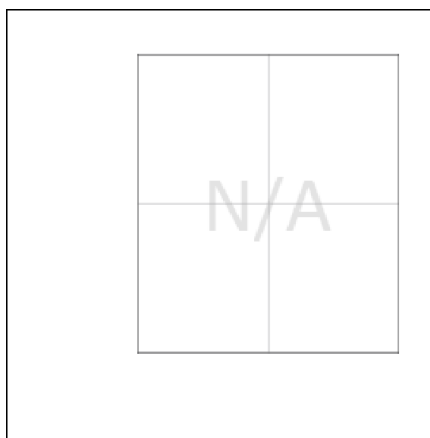
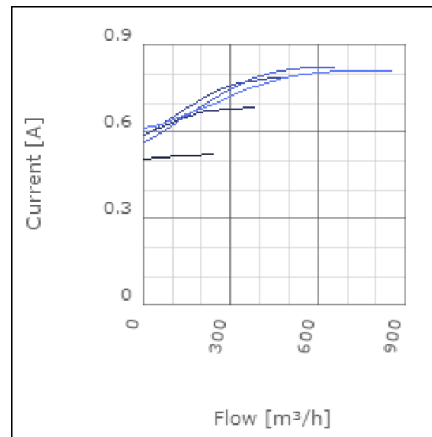
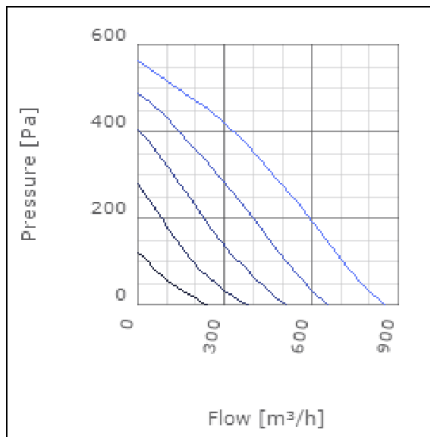
SAU supply air units are designed to give a pleasant indoor environment. They provide both heat and clean air. The units are supplied complete with filter, fan and heater. SAU125 and 200 can be operated using a dual controller; Heater on/off and fan speed 0/1/2. It is also possible to regulate externally using a pulser. SAU 250 with a water battery is operated using a 3-way valve and control equipment. The range is manufactured using galvanized sheet metal. The units are insulated with 50mm of mineral wool allowing for use in both warm and cold areas. Alternative filters are available; G4, F4 and F7 (G4 as standard).



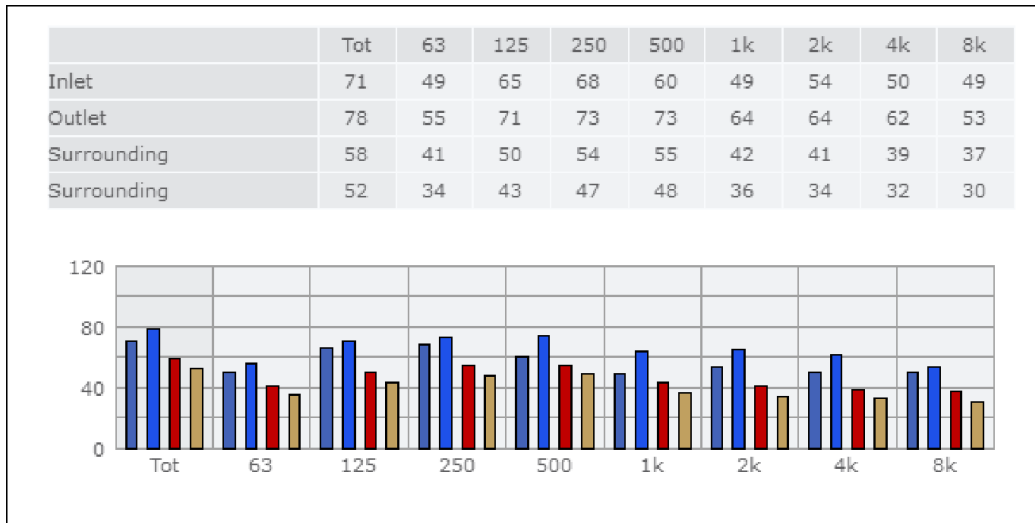
Technical data

Parameter	Value	Unit
Voltage	230	V
Phase	1	~
Frequency	50	Hz
Input power, fan	192	W
Input power, total	192	W
Current	0.84	A
Sound pressure level at 3 m	50	dB(A)
Length	1225	mm
Width	580	mm
Height	365	mm
Weight	45	kg
Enclosure class, motor	44	IP
Insulation class, motor	F	
Duct connection	ø250 mm	

Diagrams



Sound



Parameter

Distance: 3.000
 Propagation type: Hemi-spherical
 Equivalent absorption area: 20.00

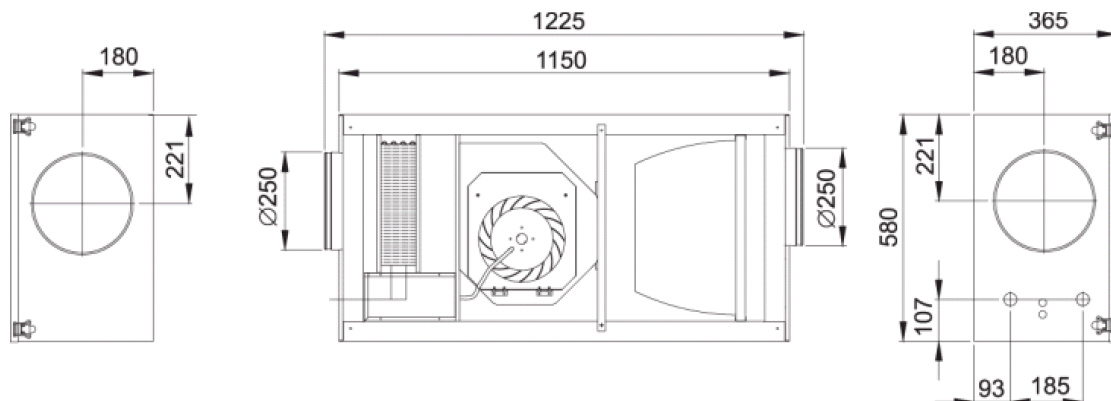
Checked point

Flow 442.446m³/h
 Static pressure 322Pa

Working point

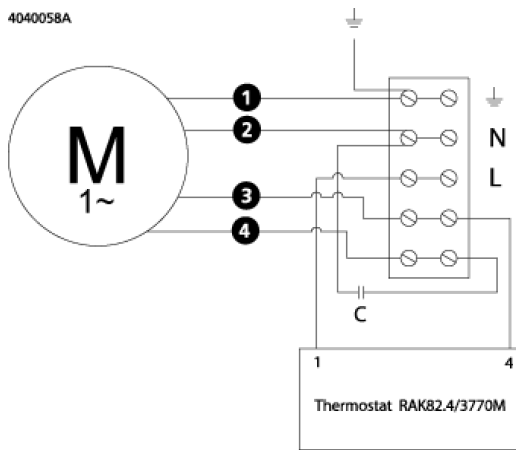
Flow 443.675m³/h
 Static Pressure 324Pa
 Power 178W
 Speed 0r/s
 Current 0.78A
 Voltage 230V
 Efficiency 22.386%
 SFP 1.45kW/m³/s

Dimensions



Wiring diagram

4040058A



- (M) = Fan Motor
- (M1) = Fan Motor
- (M2) = Fan Motor
- (M3) = Rotor Motor
- 1 = Yellow/Green
- 2 = Black
- 3 = Blue
- 4 = Brown
- 5 = White (TW)
- 6 = Orange
- 7 = Grey
- 8 = Red
- 9 = Green
- 10 = Violet

Accessories

Electrical accessories

- SAU 250 Filter
- LDC 250