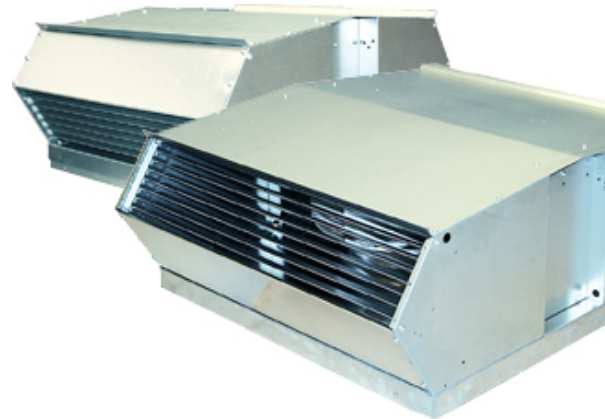


TKV/TKH 960 D3

Description

Our new, unique and patent pending roof fans you can easily modify for either horizontal or vertical outlet. Equally easy to clean and maintain. They achieve a higher airflow compared to the previous models but with even lower sound levels.



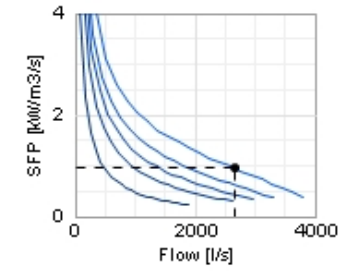
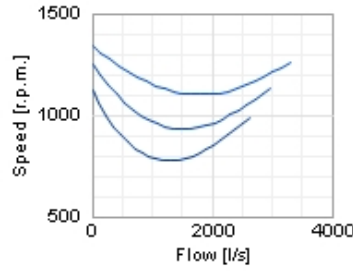
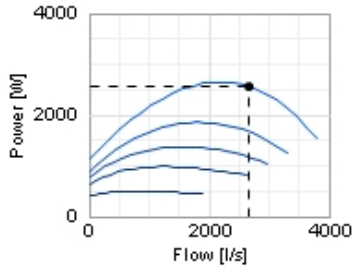
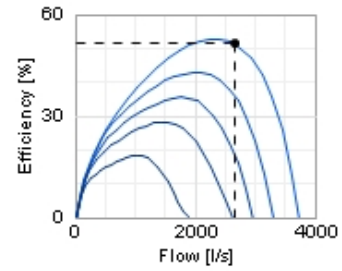
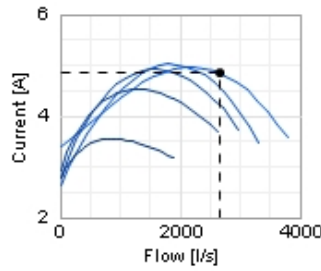
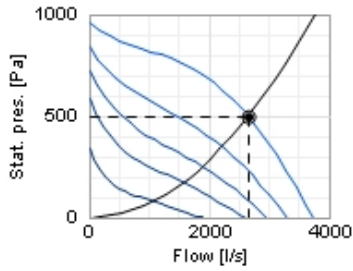
Technical data

Parameter	value	Unit
Voltage	400	V
Phase	3	~
Frequency	50	Hz
Power	2670	W
Current	5	A
R.p.m.	1330	r.p.m.
Max. temperature of transported air	45	°C
Max. temperature of transported air when speed-controlled	45	°C
Sound pressure level at 10 m	65	dB(A)
Weight	83	kg
Enclosure class, motor	44	IP
Insulation class, motor	F	
Capacitor	-	µF

Diagrams

○ Selected point

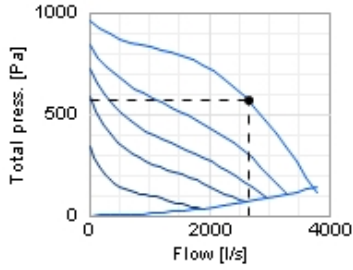
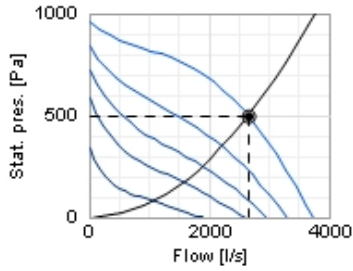
Flow [l/s]	2280
Stat. pres. [Pa]	615
● Work point	
Flow [l/s]	2280
Stat. pres. [Pa]	615
Power [W]	2649
Current [A]	4,96
Speed [r.p.m.]	-
Efficiency [%]	52,9
SFP [kW/m ³ /s]	1,14
Voltage [V]	400



Sound

○ Selected point

Flow [l/s]	2650
Stat. pres. [Pa]	498
● Work point	
Flow [l/s]	2650
Stat. pres. [Pa]	498
Total press. [Pa]	567
Power [W]	2565
Current [A]	4,86
Speed [r.p.m.]	-
Efficiency [%]	51,5
SFP [kW/m ³ /s]	0,954
Voltage [V]	400

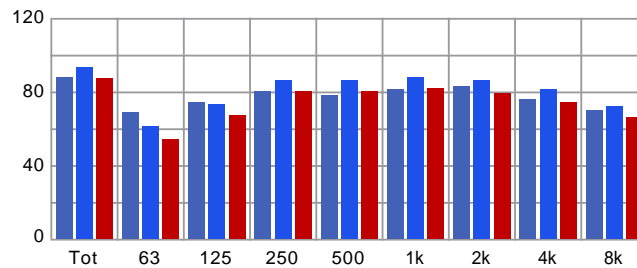


Distance: 3

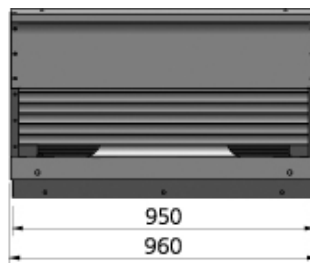
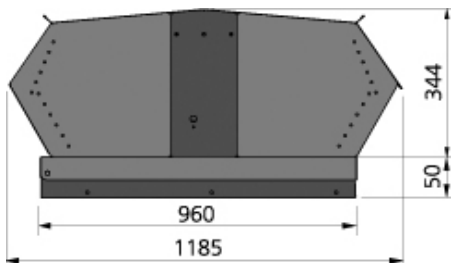
Propagation type: Semi-spherical

Equivalent absorption area: 20

	Tot	63	125	250	500	1k	2k	4k	8k
Inlet Lw dB(A)	88	69	74	80	78	81	83	76	70
Surrounding Lw dB(A)	93	61	73	86	86	88	86	81	72
Surrounding Lp dB(A)	87	54	67	80	80	82	79	74	66

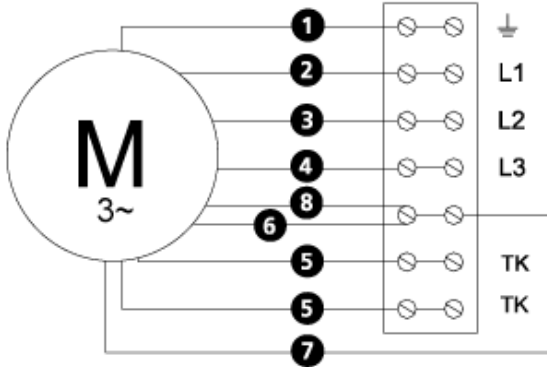


Dimensions



Wiring diagram

4040004



- Ⓜ = Fan Motor
- Ⓜ1 = Fan Motor
- Ⓜ2 = Fan Motor
- Ⓜ3 = Rotor Motor
- 1 = Yellow/Green
- 2 = Black
- 3 = Blue
- 4 = Brown
- 5 = White (TW)
- 6 = Orange
- 7 = Grey
- 8 = Red
- 9 = Green
- 10 = Violet

Accessories

Accessories



TFU 960