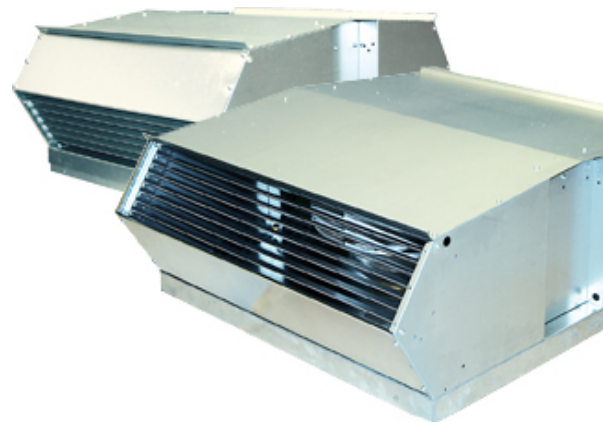


TKV/TKH 960 B1

Description

Our new, unique and patent pending roof fans you can easily modify for either horizontal or vertical outlet. Equally easy to clean and maintain. They achieve a higher airflow compared to the previous models but with even lower sound levels.



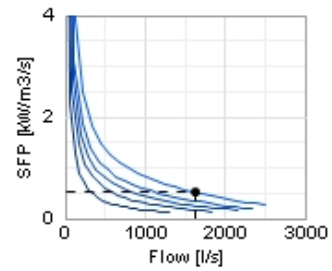
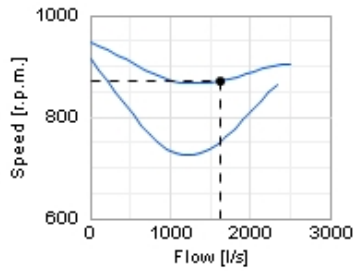
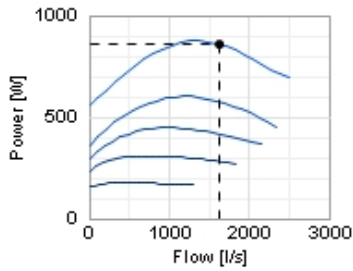
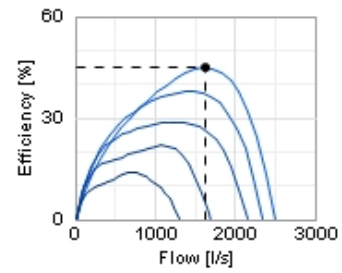
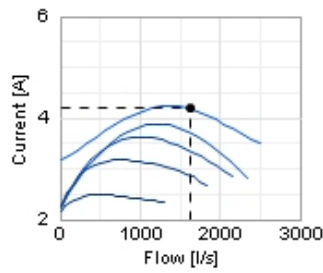
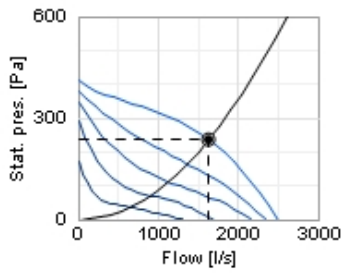
Technical data

Parameter	value	Unit
Voltage	230	V
Phase	1	~
Frequency	50	Hz
Power	880	W
Current	4,3	A
R.p.m.	870	r.p.m.
Max. temperature of transported air	55	°C
Max. temperature of transported air when speed-controlled	55	°C
Sound pressure level at 10 m	52	dB(A)
Weight	81	kg
Enclosure class, motor	44	IP
Insulation class, motor	F	
Capacitor	25	µF

Diagrams

○ Selected point

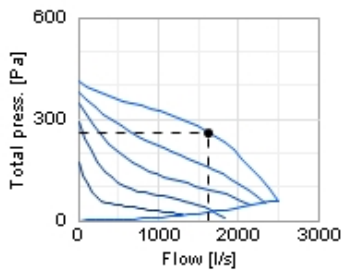
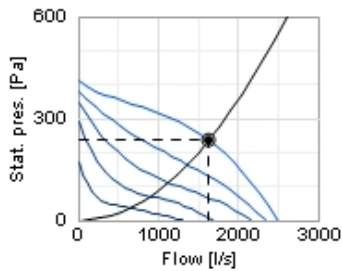
Flow [l/s]	1632
Stat. pres. [Pa]	235
● Work point	
Flow [l/s]	1631
Stat. pres. [Pa]	236
Power [W]	857
Current [A]	4,18
Speed [r.p.m.]	871
Efficiency [%]	44,8
SFP [kW/m ³ /s]	0,518
Voltage [V]	230



Sound

○ Selected point

Flow [l/s]	1632
Stat. pres. [Pa]	235
● Work point	
Flow [l/s]	1631
Stat. pres. [Pa]	236
Total press. [Pa]	261
Power [W]	857
Current [A]	4,18
Speed [r.p.m.]	871
Efficiency [%]	44,8
SFP [kW/m ³ /s]	0,518
Voltage [V]	230

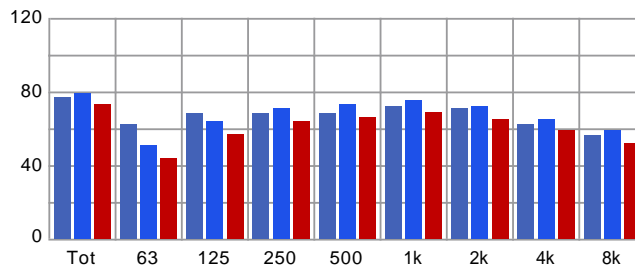


Distance: 3

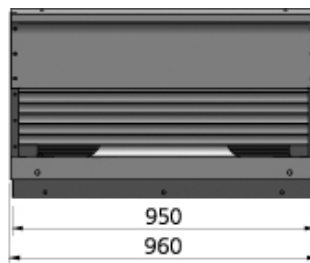
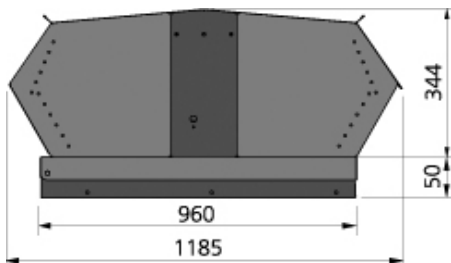
Propagation type: Semi-spherical

Equivalent absorption area: 20

	Tot	63	125	250	500	1k	2k	4k	8k
Inlet Lw dB(A)	77	62	68	68	68	72	71	62	56
Surrounding Lw dB(A)	79	51	64	71	73	75	72	65	59
Surrounding Lp dB(A)	73	44	57	64	66	69	65	59	52

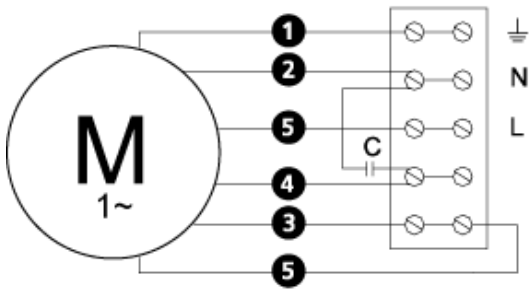


Dimensions



Wiring diagram

4040005



(M) = Fan Motor

(M1) = Fan Motor

(M2) = Fan Motor

(M3) = Rotor Motor

1 = Yellow/Green

2 = Black

3 = Blue

4 = Brown

5 = White (TW)

6 = Orange

7 = Grey

8 = Red

9 = Green

10 = Violet

Accessories

Accessories



TFU 960